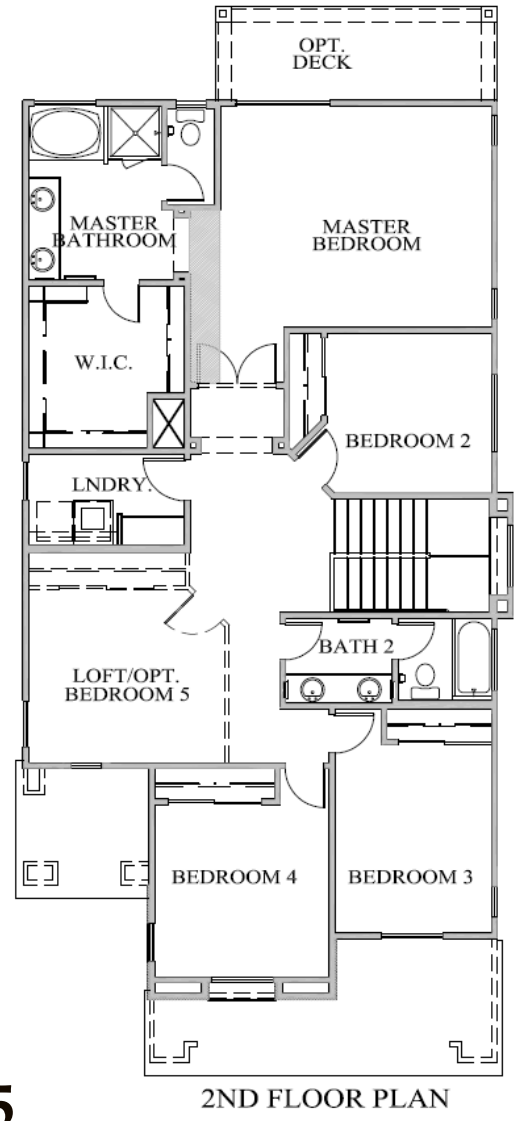
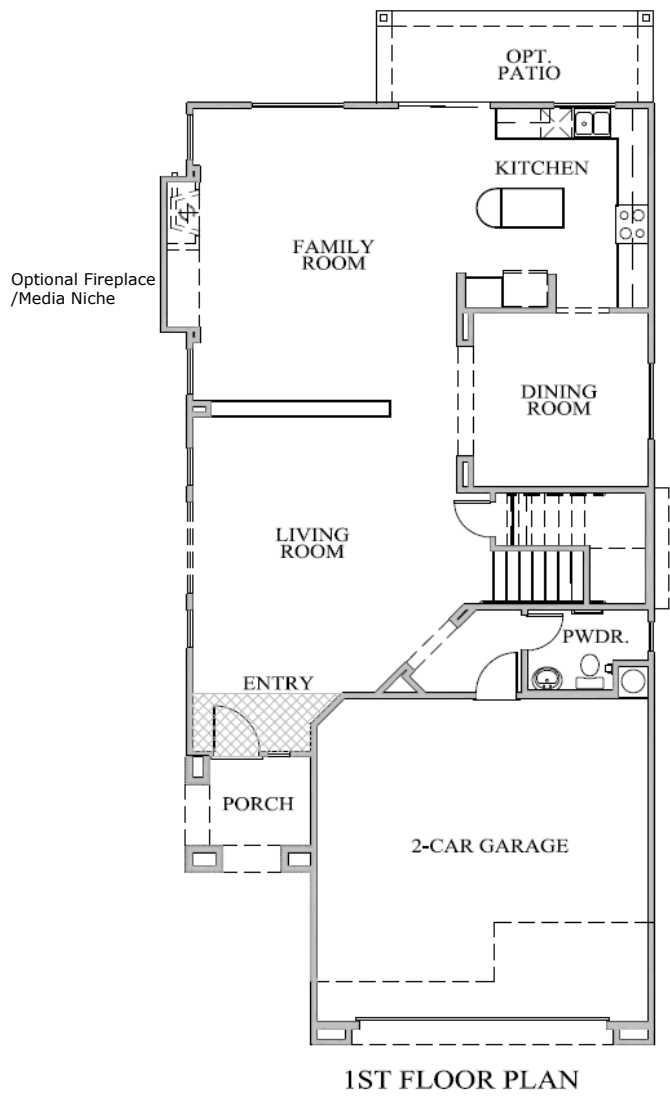




TUSCANY
RESIDENTIAL VILLAGE

La Luna II



Plan 2665

2,665 Square Feet
4 Bedrooms with a Loft
2 ½ Bathrooms
2 Car Garage



In a continuous effort by Rhodes Homes to improve the quality of your home, we reserve the right to change features, prices, plans and specifications without notice. Floorplan and elevation renderings are artists' conceptions only. Significant changes may be made during or after the construction of the model homes. Rhodes Homes reserves the right to modify, relocate or eliminate any or all of the features, specifications, plan utilities, design or shape thereof, all without notice or obligation to any purchaser. Price range reflects base price only and lot premiums may apply. Additional association fees may apply. Other fees may apply. Additional fees for golf required. Amenities are proposed and planned or may be under construction. All square footages are approximate square footages of the total livable space. Please see your onsite sales associate for details. 02/07/06

