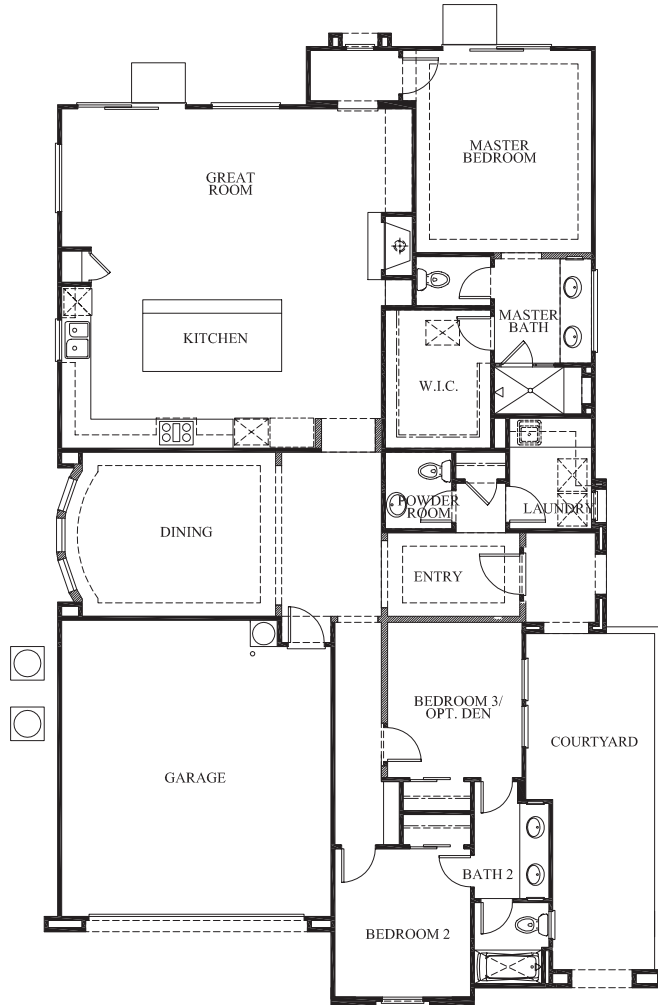


LA PIAZZA RESIDENCE

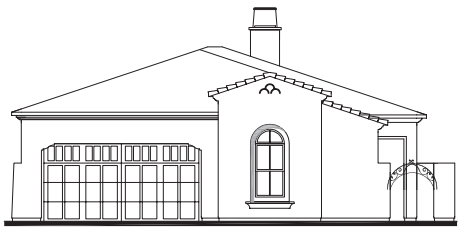
2061

50X100 HOMESITES

- › SINGLE STORY
- › 2,061 SQUARE FEET
- › 3 BEDROOMS
- › 2 BATHROOMS AND POWDER ROOM
- › 2-CAR GARAGE
- › GREAT ROOM
- › COURTYARD
- › OPTIONAL DEN



SINGLE STORY



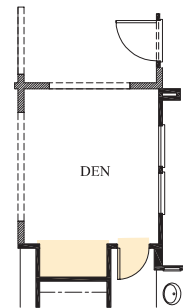
SPANISH COLONIAL



FRENCH COUNTRY



RUSTIC FARMHOUSE



OPTIONAL DEN

These floorplans are preliminary and design modifications are currently in progress. Please ask sales associate for clarifications. In a continuous effort by Rhodes Homes to improve the quality of your home, we reserve the right to change features, prices, plans and specifications without notice. Floorplan and elevation renderings are artists' conceptions only. Significant changes may be made during or after the construction of the model homes. Rhodes Homes reserves the right to modify, relocate or eliminate any or all of the features, specifications, plan utilities, design or shape thereof, all without notice or obligation to any purchaser. Price range reflects base price only. Location premiums will be charged for certain locations and are not included in the base price of the home. Additional association fees may apply. Other fees may also apply. Additional fees for golf required. Amenities are proposed and planned or may be under construction. All square footages are approximate square footages of the total livable space. Please see your onsite sales associate for additional information and more details. Information as of 1/31/07

