



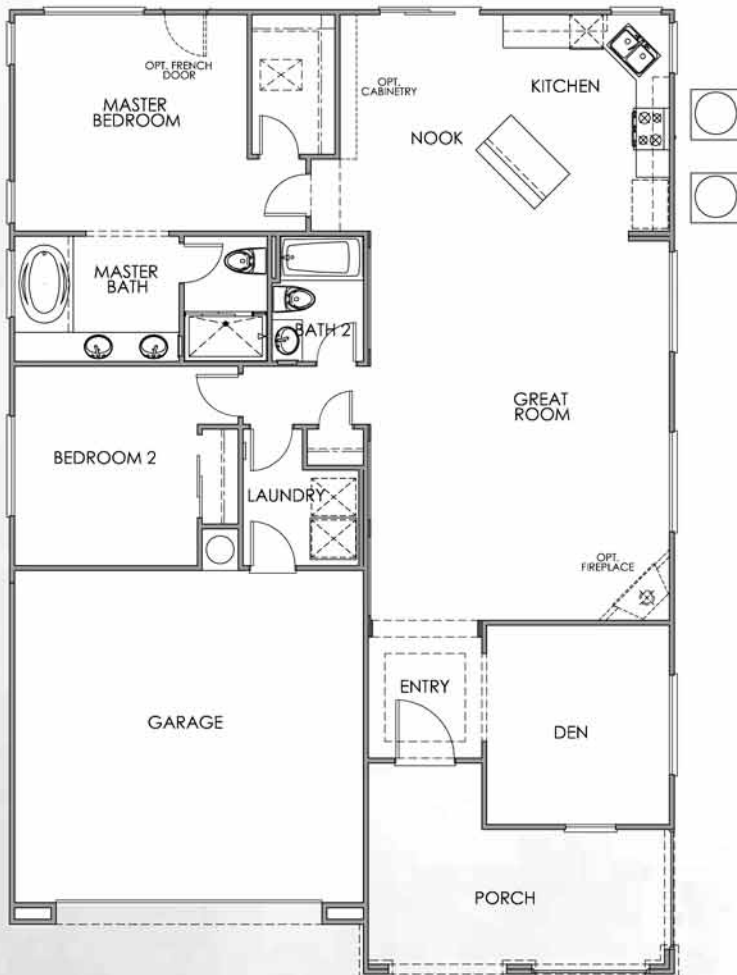
RESIDENCE

1606

PRELIMINARY



FLOORPLAN



1606 PLAN FEATURES:

- SINGLE STORY
- 2-CAR GARAGE
- 1,606 SQUARE FEET
- GREAT ROOM
- 2 BEDROOMS
- DEN
- 2 BATHROOMS
- KITCHEN W/ ISLAND

ELEVATION



TUSCAN



ITALIANATE



These floorplans are preliminary and design modifications are currently in progress. Please ask sales associate for clarifications. In a continuous effort by Rhodes Homes to improve the quality of your home, we reserve the right to change features, prices, plans and specifications without notice. Floorplan and elevation renderings are artists' conceptions only. Significant changes may be made during or after the construction of the model homes. Rhodes Homes reserves the right to modify, relocate or eliminate any or all of the features, specifications, plan utilities, design or shape thereof, all without notice or obligation to any purchaser. Price range reflects base price only. Location premiums will be charged for certain locations and are not included in the base price of the home. Additional association fees may apply. Other fees may also apply. Amenities are proposed and planned or may be under construction. All square footages are approximate square footages of the total livable space. Please see your onsite sales associate for additional information and more details. Information as of 5/30/07

